

Laboratoire Rosier Davenne

CERTIFICATE OF ANALYSIS

Model/Product/Revision/Date of revision : BAHEEN001 / Fine lavender EO / 0 / 08-02-19

Modification(s) : none

Published : 17/10/2019

p1/1

Fine lavender EO

Laboratoire Rosier Davenne code : **01L/LAVANG2**

Date of analysis : 05/03/2019

Batch number : **064RA901**

Retest date (shelf life): **10/2021**

❖ General description

Essential oil	Fine lavender EO	Origin	France
Latin name	<i>Lavandula angustifolia</i>		

❖ Sensory quality

Aspect	Clear and mobile liquid	Conform
Color	pale yellow	Conform
Odor	Characteristic	Conform

❖ Analytical quality

	Laboratoire Rosier Davenne specifications	Results	Conclusion
Density (20°C)	0,880 - 0,890	0.886	Conform
Refractive index (20°C)	1,4580 - 1,4640	1.4608	Conform
Optical rotation (20°C)	-11,5° à -6°	-7.90	Conform
Peroxide index	Not applicable	Not applicable	Not Applicable

❖ Chromatography analyse

GC : Perkin Elmer - Clarus 500

Column : Elite - Wax, 30 m, Ø 0.25 mm, 0.25 µm df

Injection : split

Detector : FID

Carrier gas : H2

-> See chromatography attached (polar column)

❖ Conclusion

Batch accepted.

Software Version : 6.3.2.0646
Sample Name : HE Lavande vrai fine 064RA901
Instrument Name : CLARUS 500
Rack/Vial : 0/8
Sample Amount : 1.000000
Cycle : 8

Date : 3/6/2019 4:52:48 PM
Data Acquisition Time : 3/6/2019 5:09:39 AM
Channel : B
Operator : Ismerie
Dilution Factor : 1.000000

Result File :
Sequence File : C:\Sequences\CPG\2019\190305.seq

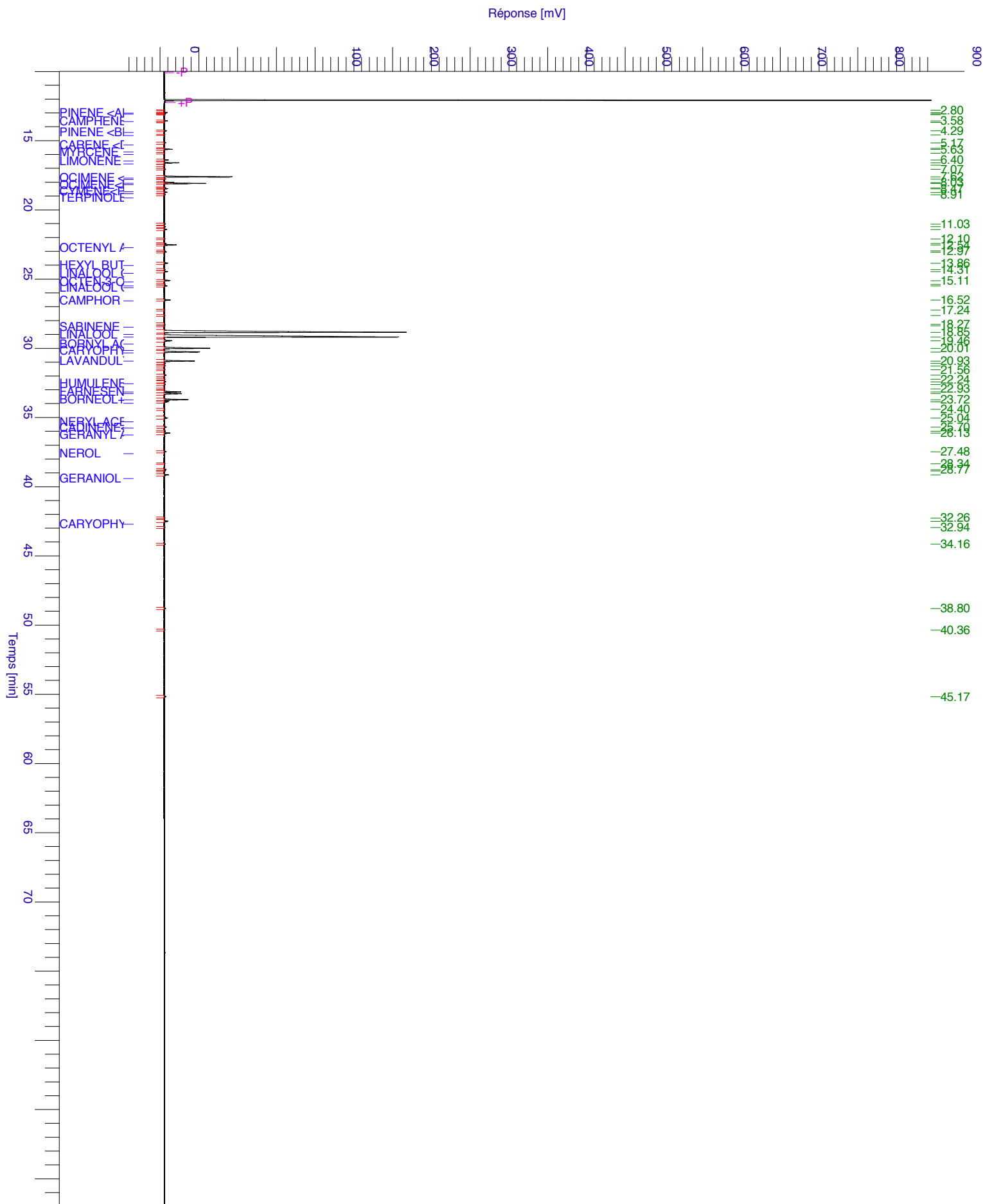
Rapport d'analyse

colonne apolaire

Pic #	Component Name	TR [min]	Area [%]
1		2.80	0.02
2	pinene <alpha>	2.98	0.13
3	thujene <alpha>	3.05	0.06
4		3.13	0.01
5	camphene	3.58	0.17
6		3.68	0.01
7	pinene <beta>	4.29	0.12
8	sabinene	4.58	0.03
9	carene <delta-3>	5.17	0.12
10		5.55	0.02
11		5.63	0.48
12	terpinene<alpha>	5.91	0.03
13	limonene	6.40	0.26
14	cineole<1.8>+phellandrene<beta>	6.61	0.98
15		6.78	0.03
16		7.07	0.07
17	ocimene <(Z)-beta>	7.62	4.58
18	terpinene<gamma>	7.77	0.08
19		8.03	0.63
20	octanone<3>	8.10	2.81
21	ocimene<E-beta>	8.42	0.09
22		8.47	0.26
23	cymene<p>	8.74	0.20
24	hexyl acetate	8.91	0.07
25		11.03	0.09
26		11.22	0.08
27		11.42	0.21
28		12.10	0.04
29		12.43	0.13
30	octenyl acetate<3>	12.54	0.95
31		12.97	0.05
32		13.05	0.16
33	hexyl butanoate	13.86	0.31
34		14.31	0.05
35	linalool oxide <cis>	14.46	0.28
36	octen-3-ol<1>	15.11	0.46
37		15.39	0.06
38	sabinene hydrate<cis>	15.50	0.23
39	camphor	16.52	0.52
40		17.24	0.03
41		17.62	0.04
42		18.27	0.06
43	sabinene hydrate <trans>	18.38	0.04
44	linalool	18.85	30.86
45	linalool acetate	19.19	34.01
46	bornyl acetate+santalene<alpha>	19.46	0.74
47	caryophyllene E	20.01	4.42
48	terpinen-4-ol	20.27	3.12
49	lavandulyl acetate	20.93	2.70
50		21.10	0.09
51		21.28	0.08
52		21.56	0.04
53		21.95	0.20
54		22.24	0.03
55		22.43	0.13
56	humulene<alpha>	22.62	0.07
57		22.93	0.03

Chromatogram

Sample Name : HE Lavande vrai fine 064RA901 Sample #: 8 Page 1 of 1
 FileName : C:\Data\Colonne Polaire\2019\190305 lavande vrai.raw
 Date : 3/6/2019 4:52:49 PM
 Method : lavande fine.mth Time of Injection: 3/6/2019 5:09:39 AM
 Start Time : 0.00 min End Time : 82.00 min Low Point : -47.13 mV High Point : 993.88 mV
 Plot Offset: -47.13 mV Plot Scale: 1041.0 mV



3/6/2019 4:52:48 PM Result:

Pic #	Component Name	TR [min]	Area [%]
58	farnesene<E-beta>	23.16	1.55
59	lavandulol	23.28	1.49
60	borneol+terpineol<alpha>	23.72	2.11
61	germacrene D	23.87	0.45
62		24.40	0.03
63	neryl acetate	25.04	0.33
64	cadinene<gamma>	25.70	0.18
65		26.00	0.07
66	geranyl acetate	26.13	0.54
67	nerol	27.48	0.16
68		28.34	0.03
69		28.77	0.16
70		28.85	0.08
71	geraniol	29.15	0.40
72		32.26	0.04
73	caryophyllene oxide	32.51	0.40
74		32.94	0.04
75		34.16	0.07
76		38.80	0.11
77		40.36	0.04
78		45.17	0.17
			100.00